

**QUASER**

***we cut faster***



# 5 Face Machining Center

## MF400C

# MF400C



**Offer max. value  
for small parts up to**  
Ø400 x 300 mm / 150 kg

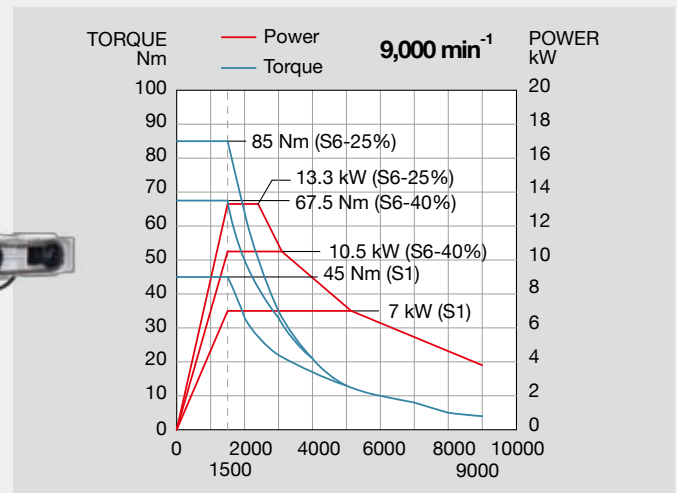
## Spindle code: NC40

- Speed range: 9,000 min<sup>-1</sup>
- Transmission: Coupling
- Lubrication: Grease packed system



**SIEMENS**

**Motor type: 1PH8105**



## Torque transfer efficiency

The matching parts of alloy steel and aluminum bronze reduce friction co-efficiency.

This provides greater transmission efficiency than that of other materials.



## Work envelope

MF400C	Rotary Axis (C-axis)	Tilting Axis (A-axis)
Max. swing(mm)	Ø400	
Table load capacity(kg)	150	
Maximum R.P.M	25 min <sup>-1</sup>	25 min <sup>-1</sup>
Indexing accuracy	± 10"	± 35"
Repeatability	5"	6"
Clamping torque	686 Nm	1,372 Nm

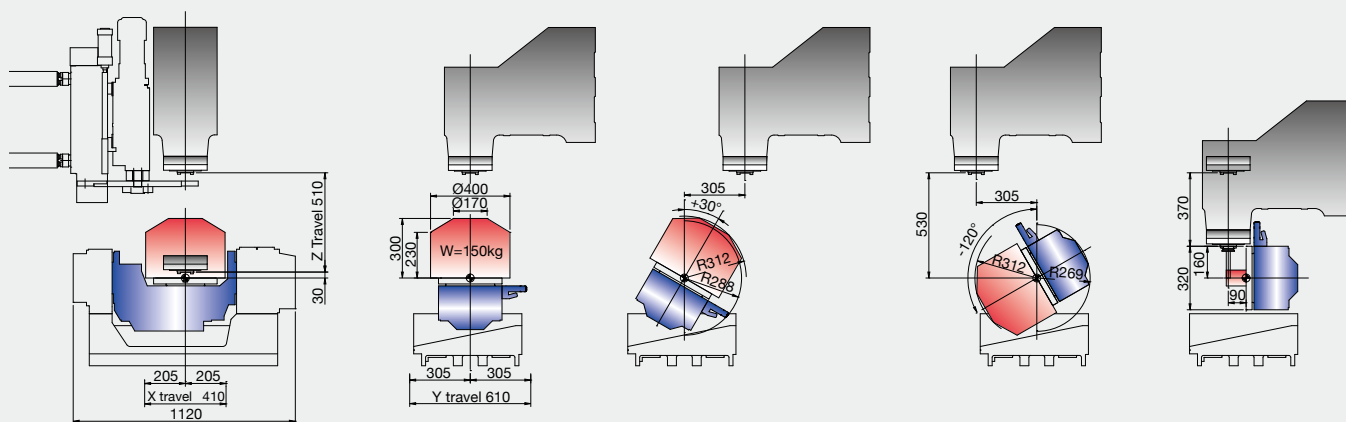


## Coolant tank 300 Liter

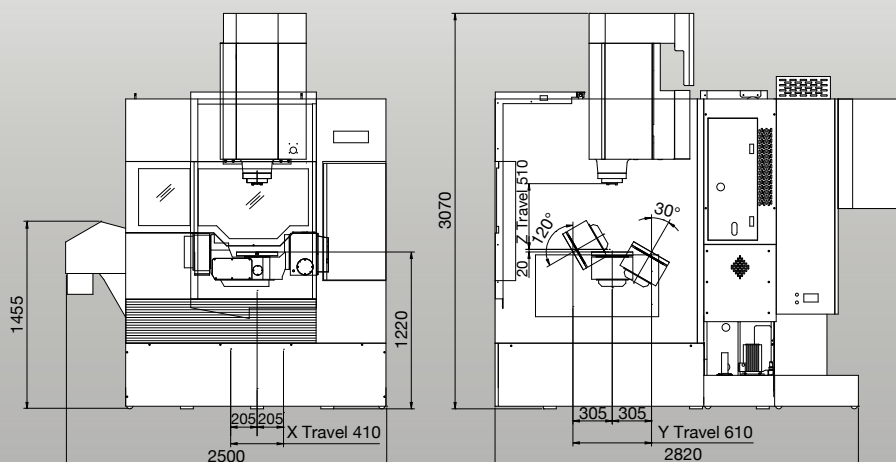
- Nozzle coolant: 3.5 bar
- Wash down: 3.5 bar
- Chip conveyor (opt.)
- Dual augers



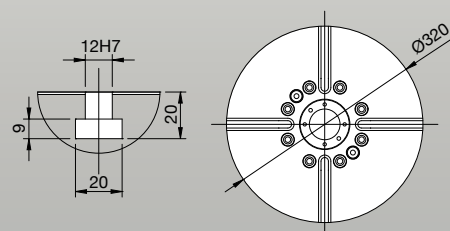
## Cutting area interference



## Installation dimension



## Table dimension



Technical Data	MF400C	
<b>Work range</b>		
Table size (mm)	Ø320	
Travel X / Y / Z (mm)	410 / 610 / 510	
A (degree)	+30° ~ -120°	
C (degree)	360° (Continuous)	
Max. swing (mm)	Ø400	
Table surface to spindle nose (mm)	20 ~ 530	
Spindle nose to tilting center at 90°	20 ~ 530	
Max. work piece size (mm)	Ø407 x 305	
Table load capacity (kg)	150 (12.2 kg-m)	
<b>Feed drive</b>		
Feed force X / Y / Z (N)	8,377 / 8,377 / 8,377	
Rapid movement X / Y / Z (m/min)	36 / 36 / 24	
A / C (min <sup>-1</sup> )	A=25 / C=25	
Acceleration X / Y / Z (m/s <sup>2</sup> )	4 / 3 / 2	
Dia. & pitch of the ball screw	Ø45 / P = 12 / 12 / 8	
<b>Accuracy Positioning / Repeatability</b>		
ISO 230-2	0.008 / 0.004	
JIS 6338 (300 mm)	± 0.003 / ± 0.002	
VDI3441	0.008 / 0.004	
<b>Main spindle</b>		
Spindle taper	BBT 40	
Max. spindle speed	9,000	
Spindle base speed	1500	
Spindle output kW (S6-40%)	10.5	
Spindle torque Nm (S6-40%)	67.5	
Spindle transmission	Coupling	
Spindle diameter (mm)	Ø70	
<b>Tool changer</b>		
Tool selection	Random	
Magazine positions	30 (Std.) 48 / 60 (Opt.)	
Max. tool diameter (mm)	76.2	
w/o adjacent tool (mm)	125	
Max. tool length (mm)	280	
Max. tool weight (kg)	7	
CTC time - ISO 10791-9 (sec.)	4.5	
<b>Coolant system</b>		
Coolant tank capacity (Liter)	300	
Pump capacity		
- Nozzle coolant	60L / min., 3.5 bar	
- Wash down	60L / min., 3.5 bar	
<b>Machine size</b>		
Height (mm)	3,070	
Floor space W x D (mm)	30/48ATC	2,500 x 2,820
	60ATC	2,500 x 3,160
Weight (kg)	7,300 (30ATC) 7,600 (48ATC) 7,800 (60ATC)	
<b>Connections</b>		
Main power	220 V / 60 Hz or 400 V / 50 Hz	
Power consumption (KVA)	24	

#### Standard accessories:

- SIEMENS 828D (5 Face)
- 9,000 min<sup>-1</sup> NC40 Coupling spindle
- Coolant wash gun
- Coolant wash down
- Chip augers
- Cutter air blast
- Documentation
- Work light
- Machine status light

#### Option accessories:

- Spindle oil chiller or ECO cooler
- 12,000 min<sup>-1</sup> NC40 Coupling spindle
- 48 / 60 position tool magazine
- ATC auto door
- Work probe
- Laser tool measuring system
- X / Y / Z linear scale & C / A rotary encoder
- Chip conveyor
- Mist collector
- CE